



# ROLLING STEEL

## Buyer's Guide

THE DOOR TO QUALITY.™



# CONTENTS

for Commercial Rolling Steel Doors

- 4 ..... 6000 NON-INSULATED SERVICE DOORS
- 6 ..... 6000 INSULATED SERVICE DOORS
- 8 ..... 7000 GUARDIAN™ FIRE DOORS
- 10.....7500 GUARDIAN™ FIRE SHUTTER
- 12.....6500 COUNTER SHUTTER
- 14.....9100/9200 SIDE-FOLDING GRILLES
- 15.....9300 LIFT READY ROLLING GRILLES



**C.H.I. Overhead Doors** manufactures industrial rolling steel doors, coiling fire doors, fire shutters, counter doors, grilles and side folding grilles to exceptional standards of quality. Our promise is to deliver affordable, owner-friendly rolling steel doors that are reliable, architecturally pleasing and simple to maintain.

## SERIES 6000 NON-INSULATED SERVICE DOORS

Series 6000 coiling service doors are engineered and designed for maximum strength and durability. Manufactured to stringent code standards, the Series 6000 line is built to provide a long-lasting reliable performance.

## SERIES 6000 INSULATED SERVICE DOORS

C.H.I. offers a premium insulated door guaranteed to deliver years of dependable operation while meeting and exceeding your project requirements. The Series 6000 is computer engineered and designed for durability, security, and thermal efficiency.

Available in a host of gauges and color options for design flexibility and to meet the rigorous applications for use.

## SERIES 7000 FIRE DOORS

Selected most often for practical drop test compliance and assuring positive crisis response, C.H.I. Guardian™ Fire Doors deliver reliable, predictable, and repeatable results. Safe, simple, inexpensive, and repeatable drop testing is now made possible in any facility with the flip of a handle.

Our Coiling Fire Doors are available in a variety of gauges, slat profiles and colors. Also choose from fail-safe time delayed releases, smoke detectors and audible and visual warning systems.

## SERIES 7500 FIRE SHUTTER

U.L. labeled counter fire doors are engineered for installation to approved sheet drywall, steel, and masonry construction for areas that require a fire listed counter door in a rated fire wall. Utilizing the same Guardian™ drop testing system, our Fire Counter Doors offer space-saving design with performance-proven engineering features.

Fire Counter Doors are available with steel and stainless steel curtain options along with a variety of optional accessories and operation choices.

## SERIES 6500 COUNTER SHUTTER

The 6500 series Coiling Counter Doors offer the best in security, flexibility, and appeal. Unique joint designs produce a flush curtain to achieve a seamless, clean appearance. End users and specifiers appreciate the design, fit, finish and practicality that define this product.

C.H.I. Coiling Counter Doors are available with steel, stainless steel or aluminum curtain options.

## SERIES 9100 AND 9200 SIDE FOLDING GRILLES AND CLOSURES

Offering the most resourceful way to secure an opening for most any application, the Side Folding Grilles and Closures move horizontally from the side of an opening or storefront by means of a track mounted to a supporting header.

The 9100 Series side folding grilles and closures are designed in a variety of configurations to complement surrounding architecture and allow for greater flexibility. The Model 9200 EZ Side Folding Grille ships in its own storage pocket and includes an aluminum pocket door, making installation a breeze. Even better, the pocket is only 6-inches wide and fits flush with a 6-inch steel stud, allowing it to be built into a wall.

## SERIES 9300 LIFT READY ROLLING GRILLE

The Series 9300 lift rolling steel doors are a revolutionary new design that reduces installation time without compromising security. Grilles are equipped with the exclusive Smart- Lock System allowing end users to engage the lock at a convenient height and then close the rolling steel door to the floor.

Available in a variety of curtain options including straight & brick rod patterns, polycarbonate, perforated aluminum, rod & link, solid aluminum, perforated, polycarbonate, and tempered glass.



The Door to Quality.™

SPRING HAVEN



LIMITED  
WARRANTY

C.H.I. Overhead Doors, Inc. ("C.H.I.") warrants rolling steel doors, shutters and components to be free from defects in materials and workmanship for a period of five (5) years. Model 6241 service doors are warranted for one (1) year. Spring wire is warranted for one year. All warranty periods begin with the date of manufacture. C.H.I.'s obligations are strictly limited to repair or replacement of defective parts and components during the warranty period.

This limited warranty excludes: (1) rust caused by damages or scratching; (2) damage resulting from exposure to corrosive chemicals, corrosive fumes, condensation, water or fire; (3) damages caused by accident, improper use, negligent operation, improper installation, improper maintenance or normal wear; (4) shipping, installation or labor charges; (5) defects in paints or coatings used to finish door sections; (6) any product or component which is modified, altered, or not part of the original door, and (7) damages resulting from any circumstances beyond the direct control of C.H.I.

In the event of a defective component, contact the dealer the door was purchased from within fifteen (15) days from discovery of the defect. C.H.I. reserves the right to inspect all products alleged to be defective and to verify eligibility of this limited warranty.

9100/9200/9300 warranted for two (2) years from the date of manufacture.

**THIS LIMITED WARRANTY EXCLUDES ANY LOSS OR DAMAGE NOT SPECIFICALLY UNDERTAKEN HEREIN, INCLUDING, WITHOUT LIMITATION, ANY CONSEQUENTIAL OR INCIDENTAL DAMAGES, SUCH AS DEATH, INJURY, DAMAGES TO PROPERTY, OR DAMAGES ARISING FROM LOSS OF USE OF ANY PRODUCT OR FACILITY. ALL OTHER WARRANTIES, EXPRESSED OR IMPLIED, INCLUDING ANY WARRANTIES OF FITNESS FOR A PARTICULAR PURPOSE AND OF MERCHANTABILITY, ARE HEREBY EXPRESSLY EXCLUDED.**

This warranty is non-transferable.

## SERIES 6000

Non-Insulated Service Doors



Standard service doors are built to order to fit specific dimensions up to 30'0" wide, 28'0" high. Consult factory for larger doors not listed. If headroom is critical, consult factory to determine headroom requirements for your application.

For downloadable specifications, please visit our website at [www.chiohd.com](http://www.chiohd.com) or call our AIA hotline at, 800-590-0559.

## BUILT FOR WORK, ANYTIME, ANYWHERE.

These coiling doors are engineered and designed for maximum strength and durability. Manufactured to stringent code standards, this Series is an industrial product built without shortcuts to provide a high degree of confidence for specifiers and end users. A wide variety of slat profiles, gauges, and color options are available.



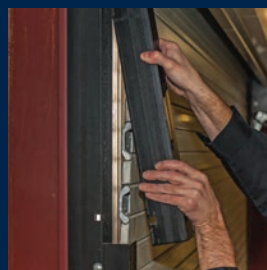
### Powder Coat

Select powder coat options from a palette of 188 colors. RAL numbers are provided for each color to ensure that your selection is consistent.



### Windows

Clear polycarbonate glazed lites approximately 5" x 1-1/8" in size and spaced 7" on center. Pattern options include one or more full rows or groups of windows.



### Service Panel

Guides feature an easily removable 24" inside angle simplifying the replacement of damaged slats or bottom bar.



C.H.I. Overhead Doors developed the resilient Windbreaker Series garage doors to protect against high wind conditions. The super-resilient C.H.I. iSeries Impact Approved doors have strength designed to withstand direct collision of projectiles and other wind-borne debris at high speeds.

# SPECIFICATIONS AND OPTIONS

## MODELS

	6241	6220	6221	6200	6201	6180	6181	6244	6266
<b>CURTAIN</b>									
Flat slat	S	—	S	—	S	—	S	S	S
Curved slat	—	S	—	S	—	S	—	—	—
Flat perforated slat [G/P]	—	—	—	—	0	—	—	—	—
Flat fenestrated slat† [see gauge colors]	0	—	0	—	0	—	0	0	0
24 gauge, Galvanized [G/W/T/B/U/P]	S	—	—	—	—	—	—	—	—
22 gauge, Galvanized [G/W/T/B/U/P]	—	S	S	—	—	—	—	—	—
20 gauge, Galvanized [G/W/U/P]	—	—	—	S	S	—	—	—	—
18 gauge, Galvanized [G/W/U/P]	—	—	—	—	—	S	S	—	—
16 gauge (.050"), aluminum [C]	—	—	—	—	—	—	—	S	—
22 gauge, Stainless steel [#4]	—	—	—	—	—	—	—	—	S

<b>BOTTOM BAR</b>									
11 gauge, Double angle [U]	S	S <sup>1</sup>	S <sup>1</sup>	S <sup>1</sup>	S <sup>1</sup>	S <sup>1</sup>	S <sup>1</sup>	—	—
Minimum 1/8" double angle steel [BK]	—	S <sup>2</sup>	S <sup>2</sup>	S <sup>2</sup>	S <sup>2</sup>	S <sup>2</sup>	S <sup>2</sup>	—	—
3/16" Double angle aluminum [C]	—	—	—	—	—	—	—	S	—
1/8" Double angle stainless steel [M]	—	—	—	—	—	—	—	—	S
Extruded aluminum (maximum width 14/4") [C]	0	—	0	—	0	—	0	0	0

<b>HOOD</b>									
24 gauge, Galvanized [G/W/T/B/U/P]	S	S	S	S	S	S	S	S	S
18 gauge (.040") aluminum [C]	—	—	—	—	—	—	—	0	—
24 gauge, Stainless steel [#4]	—	—	—	—	—	—	—	—	0

**GUIDES** Fabricated from three (minimum 3/16") structural steel angles bolted together to form guide channel. Guide angles include curtain stops and flared guides.

Painted steel [BK]	S	S	S	S	S	S	S	S	S
Hot dipped galvanized steel	0	0	0	0	0	0	0	0	0
Cold galvanized steel	0	0	0	0	0	0	0	0	0
Clear anodized finish aluminum <sup>3</sup>	—	—	—	—	—	—	—	0	—
Mill finish stainless steel	—	—	—	—	—	—	—	—	0

<b>OPERATION</b>									
Manual push-up [to 80sq.ft. or ≤8'4" high]	S	0	0	0	0	0	0	0	0
Manual push-up [to 120sq.ft. or ≤8'4" high]	—	—	—	—	—	—	—	0	—
Chain hoist	S <sup>4</sup>	S	S	S	S	S	S	S	S
Motor	0	0	0	0	0	0	0	0	0

<b>WINDLOAD</b>									
Windbreaker Series	—	0	0	0	0	0	0	—	0
Impact Series	—	0	0	0	0	0	0	—	0

**STANDARD DIMENSIONS** Consult factory for larger sizes.

Width	12'0"	20'4"	20'4"	28'4"	28'4"	30'0"	30'0"	14'4"	18'4"
Height	14'4"	20'4"	20'4"	28'0"	28'0"	28'0"	28'0"	18'4"	20'4"

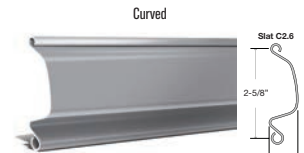
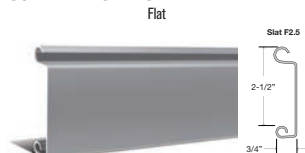
**LOCKING** Manual push-up doors furnished with interior slide bolt locks with padlock provision standard. Chain hoist operated doors furnished with chain hoist keeper suitable for padlocking. Optional bottom bar cylinder locking available.

**WARRANTY** Manufacturer's standard 5-year from date of plant shipment against defects in materials or workmanship. Model 6241 service doors are warranted for one year. Spring wire is warranted for one year. C.H.I.'s obligations are strictly limited to repair or replacement of defective parts and components during the warranty period.

**INSTALLATION** C.H.I. Rolling Steel Doors shall be installed and adjusted according to C.H.I. assembly instructions by trained door service technicians.

S = Standard 0 = Optional — = Not available G = Gray W = White T = Tan B = Brown U = Unpainted galvanized C = Clear anodized #4 = #4 polished P = Powder coat BK = Black † = Fenestrations or windows are 5" x 1-1/8" on 7" centers. Specify number and location.  
 1 Standard on doors up to 14'4" wide. 2 Standard on doors over 14'4" wide. 3 Wall and pack-out angles painted steel. 4 Standard for doors over 10'4" wide and 8'4" high.

### CURTAIN PROFILES



### FINISHES

Gray [G]

White [W]

Tan [T]

Brown [B]

## SERIES 6000

Insulated Service Doors



Standard service doors are built to order to fit specific dimensions up to 30'0" wide, 24'0" high. Consult factory for larger doors not listed. If headroom is critical, consult factory to determine headroom requirements for your application.

For downloadable specifications, please visit our website at [www.chiohd.com](http://www.chiohd.com) or call our AIA hotline at, 800-590-0559.

## VERSATILE AND CAPABLE FOR ALL CLIMATES.

These coiling doors are engineered and designed for maximum strength and durability. Manufactured to stringent code standards, the Series 6000 insulated coiling door is an industrial product built to provide a high degree of confidence for specifiers and end users. A wide variety of gauges, and color options are available.



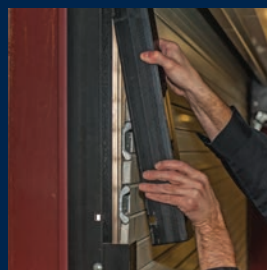
### Powder Coat

Select powder coat options from a palette of 188 colors. RAL numbers are provided for each color to ensure that your selection is consistent.



### Windows

Clear acrylic glazed lites approximately 5" x 1-1/8" in size and spaced 7" on center. Pattern options include one or more full rows or groups of windows.



### Service Panel

Guides feature an easily removable 24" inside angle simplifying the replacement of damaged slats or bottom bar.



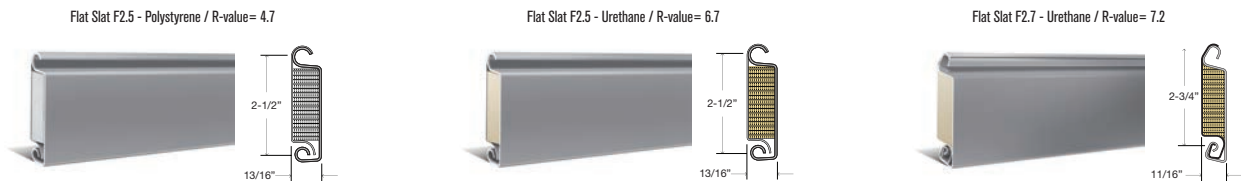
C.H.I. Overhead Doors developed the resilient Windbreaker Series garage doors to protect against high wind conditions. The super-resilient C.H.I. iSeries Impact Approved doors have strength designed to withstand direct collision of projectiles and other wind-borne debris at high speeds.

# SPECIFICATIONS AND OPTIONS

	MODELS			
	6242	6222	6202	6182
<b>CURTAIN</b>				
Flat slat	S	S	S	S
<b>Exterior Skin</b>				
24 gauge, Galvanized [G/W/T/B/U/P]	S	—	—	—
22 gauge, Galvanized [G/W/T/B/U/P]	—	S	—	—
20 gauge, Galvanized [G/W/U/P]	—	—	S	—
18 gauge, Galvanized [G/W/U/P]	—	—	—	S
<b>Interior Skin</b>				
24 gauge, Galvanized [G/W/T/B/U/P]	S	S	S	S
<b>INSULATION</b>				
Laid in Place [LIP] Polystyrene	—	—	—	S
Laid in Place [LIP] Urethane	—	—	—	0
Foamed in Place [FIP] Urethane	S	S	S	—
R-Value	7.2	7.2	7.2	4.7 or 6.7
<b>BOTTOM BAR</b>				
11 gauge, Double angle [U]	S <sup>1</sup>	S <sup>1</sup>	S <sup>1</sup>	S <sup>1</sup>
Minimum 1/8" double angle steel [BK]	S <sup>2</sup>	S <sup>2</sup>	S <sup>2</sup>	S <sup>2</sup>
Extruded aluminum (maximum width 14'4") [C]	0	0	0	0
<b>HOOD</b>				
24 gauge, Galvanized [G/W/T/B/U/P]	S	S	S	S
<b>GUIDES</b> Fabricated from three (minimum 3/16") structural steel angles bolted together to form guide channel. Guide angles include curtain stops and flared guides.				
Painted steel [BK]	S	S	S	S
Hot dipped galvanized steel	0	0	0	0
Cold galvanized steel	0	0	0	0
<b>OPERATION</b>				
Chain hoist	S	S	S	S
Motor	0	0	0	0
<b>WINDLOAD</b>				
Windbreaker Series	0	0	0	—
Impact Series	0	0	0	—
<b>STANDARD DIMENSIONS</b> Consult factory for larger sizes.				
Width	24'4"	24'4"	30'0"	30'0"
Height	16'4"	20'4"	24'0"	24'0"
<b>LOCKING</b> Chain hoist operated doors furnished with chain hoist keeper suitable for padlocking. Optional bottom bar cylinder locking available.				
<b>WARRANTY</b> Manufacturer's standard 5-year from date of plant shipment against defects in materials or workmanship. Spring wire is warranted for one year. C.H.I.'s obligations are strictly limited to repair or replacement of defective parts and components during the warranty period.				
<b>INSTALLATION</b> C.H.I. Rolling Steel Doors shall be installed and adjusted according to C.H.I. assembly instructions by trained door service technicians.				

S = Standard 0 = Optional — = Not available G = Gray W = White T = Tan B = Brown U = Unpainted galvanized C = Clear anodized P = Powder coat BK = Black  
 1 Standard on doors up to 14'4" wide. 2 Standard on doors over 14'4" wide.

## CURTAIN PROFILES



## FINISHES



# MODEL 7000

Guardian™ Fire Doors



Guardian™ Fire Doors are built to order to fit specific dimensions up to 24'0" wide, 24'0" high. Consult factory for larger doors not listed. If headroom is critical, consult factory to determine headroom requirements for your application.

For downloadable specifications, please visit our website at [www.chiohd.com](http://www.chiohd.com) or call our AIA hotline at, 800-590-0559.

## A PROTECTION PLAN MAKES A DIFFERENCE.

The Guardian™ Fire Door is engineered to meet ever-increasing demands of property owners and insurance underwriters in a simple, easy-to-test, and reset fire protection product with a U.L. label rating from 3/4-hour to 4-hour protection. Manual push-up, chain hoist and automatic reset motor operation is available for Guardian™ Fire Doors and can incorporate one of several release device options. The National Fire Protection Association (NFPA) and other model codes recommend frequent drop testing of rolling steel fire doors to ensure a continuous state of operational readiness. C.H.I. strongly promotes these recommendations with the Guardian™ advanced design features.



### Auto-Reset Operator

Automatically resets following a drop test or activation and is operable as soon as the alarm is cleared saving time and money.



### Grifco

Gear reduced chain hoist features a centrifugal governor that can be adjusted to control the drop speed of the door.



### Simple Test

Standard feature used for drop testing and resetting of the fire door from the floor without ladders, tools or other equipment.



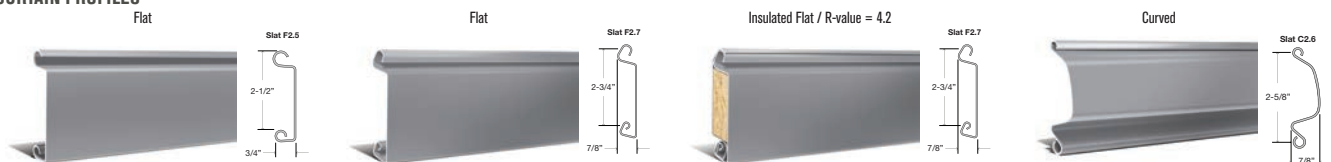
# SPECIFICATIONS AND OPTIONS

## MODELS

	7400	7401	7301	7302	7366
<b>CURTAIN</b>					
Flat slat	—	S	S	S	S
Curved slat	S	—	—	—	—
<b>Exterior Skin</b>					
22 gauge, Galvanized† [G/W/T/B/U/P]	S <sup>1</sup>	S <sup>1</sup>	S <sup>2</sup>	S <sup>2</sup>	—
20 gauge, Galvanized† [G/W/U/P]	S <sup>3</sup>	S <sup>3</sup>	S <sup>4</sup>	S <sup>4</sup>	—
18 gauge, Galvanized† [G/W/U/P]	S <sup>4</sup>	S <sup>4</sup>	0	—	—
22 gauge, Stainless steel [#4]	—	—	—	—	S
<b>Interior Skin</b>					
24 gauge, Galvanized [G/W/T/B/U/P]	—	—	—	S	—
<b>INSULATION</b>					
Mineral wool	—	—	—	S	—
R-Value	—	—	—	4.2	—
<b>BOTTOM BAR</b>					
Minimum 1/8" double angle steel [BK]	S	S	S	S	—
1/8" Double angle stainless steel [M]	—	—	—	—	S
<b>HOOD</b>					
24 gauge, Galvanized [G/W/T/B/U/P]	S	S	S	S	—
24 gauge, Stainless steel [#4]	—	—	—	—	S
<b>GUIDES</b> Fabricated from three (minimum 3/16") structural steel angles bolted together to form guide channel. Guide angles include curtain stops and flared guides.					
Painted steel [BK]	S	S	S	S	S
Hot dipped galvanized steel	0	0	0	0	0
Cold galvanized steel	0	0	0	0	0
Mill finish stainless steel	—	—	—	—	0
<b>FIRE RATING</b>					
3/4-Hour	Approved	Approved	Approved	Approved	Approved
1-1/2-Hour	Approved	Approved	Approved	Approved	Approved
3-Hour	Approved	Approved	Approved	Approved	Approved
4-Hour	Approved	Approved	—	—	—
<b>OPERATION</b>					
Manual push-up [maximum size is 12'4" x 10'4"]	0	0	0	—	0
Chain hoist	S	S	S	S	S
Motor	0	0	0	0	0
<b>STANDARD DIMENSIONS</b> Consult factory for larger sizes.					
Width	24'0"	24'0"	24'0"	24'0"	13'0"
Height	24'0"	24'0"	24'0"	20'4"	24'0"
<b>LOCKING</b> Manual push-up doors furnished with interior slide bolt locks with padlock provision standard. Chain hoist operated doors furnished with chain hoist keeper suitable for padlocking. Optional bottom bar cylinder locking available.					
<b>WARRANTY</b> Manufacturer's standard 5-year from date of plant shipment against defects in materials or workmanship. Spring wire is warranted for one year. C.H.I.'s obligations are strictly limited to repair or replacement of defective parts and components during the warranty period.					
<b>INSTALLATION</b> C.H.I. Rolling Steel Doors shall be installed and adjusted according to C.H.I. assembly instructions by trained door service technicians.					

S = Standard 0 = Optional — = Not available G = Gray W = White T = Tan B = Brown U = Unpainted galvanized #4 = #4 polished P = Powder coat BK = Black † = Gauge is dictated by UL procedure. Call for more information.  
 1 Standard on doors up to 13'4" wide. 2 Standard on doors up to 18'4" wide. 3 Standard on doors from 13'5" to 18'4" wide. 4 Standard on doors from 18'5" to 24'0" wide.

### CURTAIN PROFILES

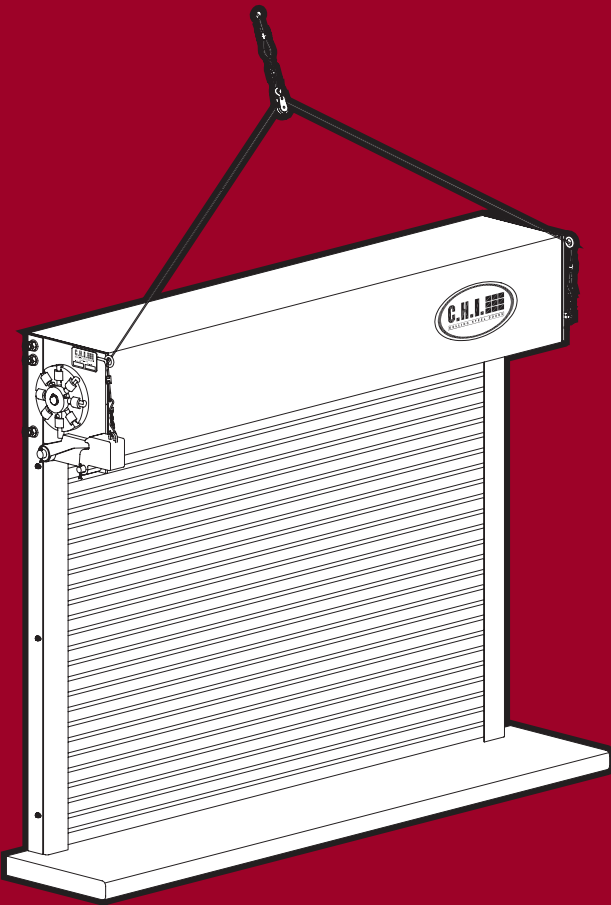


### FINISHES



## MODEL 7500

Fire Shutter



Standard fire counter shutters are built to order to fit specific dimensions up to 13'0" wide, 8'4" high. Consult factory for larger doors not listed. If headroom is critical, consult factory to determine headroom requirements for your application.

For downloadable specifications, please visit our website at [www.chiohd.com](http://www.chiohd.com) or call our AIA hotline at, 800-590-0559.

Fire protection manufactured to the highest standards, C.H.I. fire shutters feature attractive, space-saving designs and user-friendly operation.

U.L. labeled for installation to approved drywall, masonry and steel construction, Series 7500 Fire Shutters meet all U.L. requirements for counter and window openings.

### FEATURES:

- 45-minute, 90-minute and 3-hour U.L. labels with full compliance to NFPA-80 standards
- Standard curtain features 1-1/2" pre-painted, hot-dipped galvanized steel slats
- Optional stainless steel curtain and guides available in a #4 finish
- Shop painted guides in a medium gloss black and matches well with many standard and powder coated curtain finishes
- Reliable viscous governor provides smooth, quiet drop testing
- Easily drop tested and reset with a minimum of downtime to assure operational readiness
- Designed for face of wall mount and between-jamb mounting configurations
- Manual push-up operation is standard for all fire shutters up to 10'4" x 8'4"
- Gear reduced awning crank operation is optional for all fire shutters and is standard for doors over 10'4" wide
- Bottom bar slide bolt locks are standard with cylinder locking optional.
- 165-degree fusible links are provided as standard detection/release devices
- May be installed with all approved detection and release devices
- Attractive, compact hood is designed for maximum efficiency in tight areas

# SPECIFICATIONS AND OPTIONS

## MODELS

	7522	7566
<b>CURTAIN</b>		
Flat slat	S	S
<b>Exterior Skin</b>		
22 gauge, Galvanized [G/W/P/U]	S	—
22 gauge, Stainless steel [#4]	—	S
<b>BOTTOM BAR</b>		
11 gauge, Single angle steel [BK]	S	—
1/8" Single angle stainless steel [M]	—	S
<b>LOCKS</b>		
Plated steel slide locks	S	—
Stainless steel slide locks	—	S
<b>HOOD</b>		
24 gauge, Galvanized [G/W/U/P]	S	—
24 gauge, Stainless steel [#4]	—	S
<b>GUIDES</b> Fabricated from two formed pieces of 11 gauge steel or stainless steel to create guide channel. Guide angles include curtain stops and flared guides.		
Painted steel [BK]	S	—
Stainless steel [#4]	—	S
<b>FIRE RATING</b>		
3/4-Hour	Approved	Approved
1-1/2-Hour	Approved	Approved
3-Hour	Approved	Approved
<b>OPERATION</b>		
Manual push-up [maximum size is 10'4" x 8'4"]	S <sup>1</sup>	S <sup>1</sup>
Awning Crank	S <sup>2</sup>	S <sup>2</sup>
Motor	0	0
<b>STANDARD DIMENSIONS</b> Consult factory for larger sizes.		
Width	13'0"	13'0"
Height	8'4"	8'4"
<b>WARRANTY</b> Manufacturer's standard 5-year from date of plant shipment against defects in materials or workmanship. Spring wire is warranted for one year. C.H.I.'s obligations are strictly limited to repair or replacement of defective parts and components during the warranty period.		
<b>INSTALLATION</b> C.H.I. Rolling Steel Doors shall be installed and adjusted according to C.H.I. assembly instructions by trained door service technicians.		

S = Standard 0 = Optional — = Not available G = Gray W = White U = Unpainted galvanized #4 = #4 polished P = Powder coat BK = Black † = Gauge is dictated by UL procedure. Call for more information.  
 1 Standard on doors up to 10'4" wide. 2 Standard on doors up to 13'0" wide.

### CURTAIN PROFILES

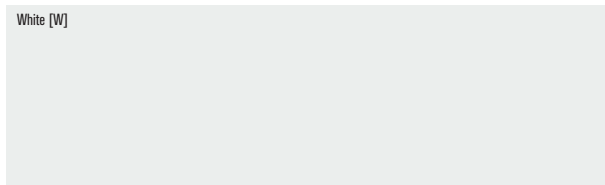


### FINISHES

Gray [G]



White [W]



# MODEL 6500

Counter Shutter



Standard counter shutters are built to order to fit specific dimensions up to 14'4" wide, 8'4" high. Consult factory for larger doors not listed. If headroom is critical, consult factory to determine headroom requirements for your application.

For downloadable specifications, please visit our website at [www.chiohd.com](http://www.chiohd.com) or call our AIA hotline at, 800-590-0559.

## PROVEN CAPABILITY FOR YOUR APPLICATION.

The 6500 series roll-up doors offer the best in security, flexibility, and appeal. Reduced sized slats provide for smoother operation and a more aesthetically pleasing appearance. End users and specifiers recognize the 6500 Series as state-of-the-art in design, fit, and finish, yet appreciate the simplicity and practicality that define the product.



### Powder Coat

Select powder coat options from a palette of 188 colors. RAL numbers are provided for each color to ensure that your selection is consistent.



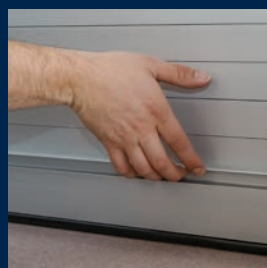
### Hidden Fasteners

Two piece guide system incorporates fasteners concealed by the front guide for a clean appearance and easy installation.



### Tube Motor

Invisible tubular motor operation, awning crank operation, or wall mount motor is optional.



### Integral Lift Rails

Included on the bottom bar provide full-width manual access and simplified lifting.

# SPECIFICATIONS AND OPTIONS

## MODELS

	6522	6544	6566
<b>CURTAIN</b>			
Flat slat	S	S	S
<b>Exterior Skin</b>			
22 gauge, Galvanized [G/W/P/U]	S	—	—
16 gauge (.050"), Extruded aluminum [C/P]	—	S	—
22 gauge, Stainless steel [#4]	—	—	S
<b>BOTTOM BAR</b>			
Extruded aluminum [C]	S	S	—
11 gauge, Stainless steel	—	—	S
Tubular stainless steel	—	—	0
<b>LOCKS</b>			
Thumb turn lock and handle	S <sup>1</sup>	S <sup>1</sup>	0 <sup>2</sup>
Keyed lock and handle	0	0	0 <sup>2</sup>
Best cylinder	0	0	0 <sup>2</sup>
Stainless steel slide locks	—	—	S
<b>HOOD &amp; HEADPLATE COVERS</b>			
24 gauge, Galvanized [G/W/T/U/P]	S	—	—
20 gauge, Aluminum [C/P]	—	S	—
24 gauge, Stainless steel [#4]	—	—	S
<b>GUIDES</b> Fabricated from two pieces of extruded aluminum or formed stainless steel to create guide channel. Guide angles include curtain stops and flared guides.			
Extruded aluminum [C]	S	S	S
11 gauge, Stainless steel [#4]	—	—	0
<b>OPERATION</b>			
Manual Operation	S <sup>3</sup>	S <sup>3</sup>	S <sup>3</sup>
Awning Crank	0 <sup>4</sup>	0 <sup>4</sup>	0 <sup>4</sup>
Tube Motor	0	0	0
Wall Mounted Motor	0	0	0
<b>STANDARD DIMENSIONS</b> Consult factory for larger sizes.			
Width	14'4"	14'4"	14'4"
Height	8'4"	8'4"	8'4"
<b>WARRANTY</b> Manufacturer's standard 5-year from date of plant shipment against defects in materials or workmanship. Spring wire is warranted for one year. C.H.I.'s obligations are strictly limited to repair or replacement of defective parts and components during the warranty period.			
<b>INSTALLATION</b> C.H.I. Rolling Steel Doors shall be installed and adjusted according to C.H.I. assembly instructions by trained door service technicians.			

S = Standard 0 = Optional — = Not available G = Gray W = White C = Clear anodized #4 = #4 polished P = Powder coat U = Unpainted Galvanized  
 1 Standard for manual and awning crank operated doors. 2 Only available with tubular stainless steel bottom bar. 3 Standard for doors up to 10'4" wide. 4 Standard for door over 10'4" wide.

### CURTAIN PROFILES

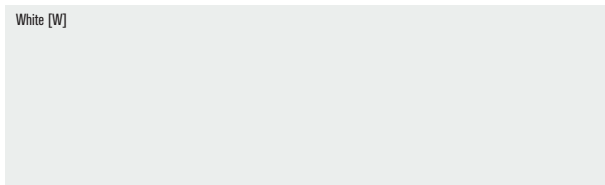


### FINISHES

Gray [G]



White [W]



# 9100/9200 SERIES

Side-Folding Grilles & Closures



Side folding grilles are built to order to fit specific dimensions with unlimited width and a maximum standard height of 14'0". Consult factory for larger doors or for assistance with pocket requirements and layout options.

For downloadable specifications, please visit our website at [www.chiohd.com](http://www.chiohd.com) or call our AIA hotline at, 800-590-0559.

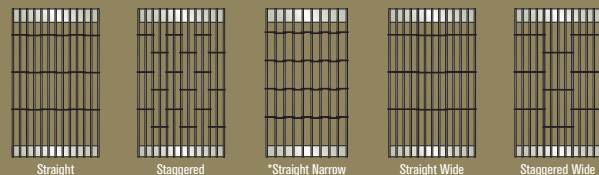
With no limit on width and numerous track layouts, there are virtually no openings that can not be secured with a side folding grille/closure. Standard curves as well as special curves give the designer the ability to follow most any line for maximum space advantage and three body widths allows for customizing stack/pocket dimensions. Top supported design eliminates a bottom track reducing maintenance and makes manual operation quick and easy. The standard clear anodized finish gives a durable, finished appearance and emergency exits are available when required.

The 9100 offers the maximum design options with a wide variety of panel sizes and materials to choose from. Material options include Rod and Link, Tempered Glass, Polycarbonate, Perforated or Solid. With 3 panel sizes to choose from, you'll be sure to find the right option to provide the desired appearance and fit the application.

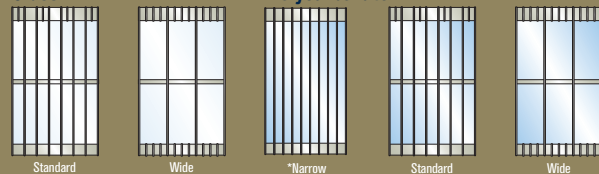
The 9200 is pre-installed in it's own storage pocket to provide for quick and easy installation. The steel pocket frame installs within the footprint of a 6" wall and includes an extruded aluminum pocket door. The 9200 can accommodate openings up to 32' wide from a single pocket or 64' from bi-parting pockets and is available in 4 design options.

Available 9100 designs:

### Rod and Link

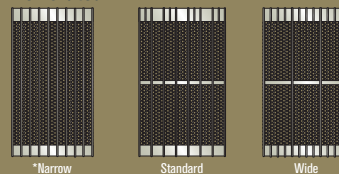


### Glass



### Polycarbonate

### Perforated



### Solid



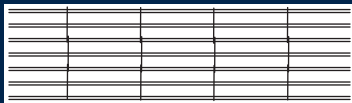
\*Also available in 9200.

## Series 9300

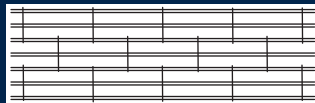
### Lift Ready Rolling Grilles

The Series 9300 Lift Ready is a revolutionary new design that reduces installation time and effort without compromising security. Choose from five grille patterns that best suit your application.

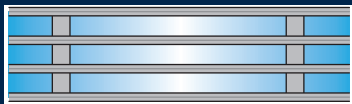
9300 designs:



Straight Grille Pattern



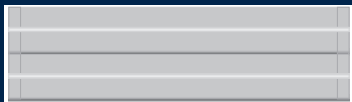
Brick Grille Pattern



Polycarbonate Panel



Perforated Aluminum



Solid Aluminum

The Life Ready Series comes equipped with the following standard features making installation and operation as easy as possible:

- Classic grille looks offers you security, visibility and ventilation while well engineered design features streamline the installation process to save time and money
- Features a protective clear anodized finish
- Manual push, chain hoist, awning crank or motor operation
- Optional hoods and fascias in steel or aluminum are available for exposed coil applications
- The Quick-Lock System allows the user to engage the lock at a convenient height, then close the grille to the floor where it locks automatically
- The pioneering installation features include the curtain factory wrapped on the aluminum barrel for ease in moving to the site
- Slotted headplates allow for drop in installation of the barrel and curtain eliminating the time needed to center up the curtain
- Built in ratcheting mechanism makes it faster and safer to wind the spring
- The ground breaking optional telescoping support tube system is easier to locate and install than traditional steel tubes



Lift Ready's ratcheting charging arm makes winding the spring easy and safe. The slotted headplates allow the barrel to drop in place, speeding installation.



Lift Ready's exclusive extruded aluminum telescoping support tubes makes locating the tubes to the site easier.

Rolling grilles are built to order to fit specific dimensions up to 24'0" wide, 12'6" high. Consult factory for larger doors not listed. If headroom is critical, consult factory to determine headroom requirements for your application.

For downloadable specifications, please visit our website at [www.chiohd.com](http://www.chiohd.com) or call our AIA hotline at, 800-590-0559.



PLEASE VISIT OUR WEBSITE AT [WWW.CHIOHD.COM](http://WWW.CHIOHD.COM) TO SEE OUR ENTIRE LINE OF SECTIONAL AND ROLLING STEEL DOORS.

ASK YOUR DOOR PROFESSIONAL AT:

C.H.I. Overhead Doors are manufactured in Arthur, Illinois, USA.

