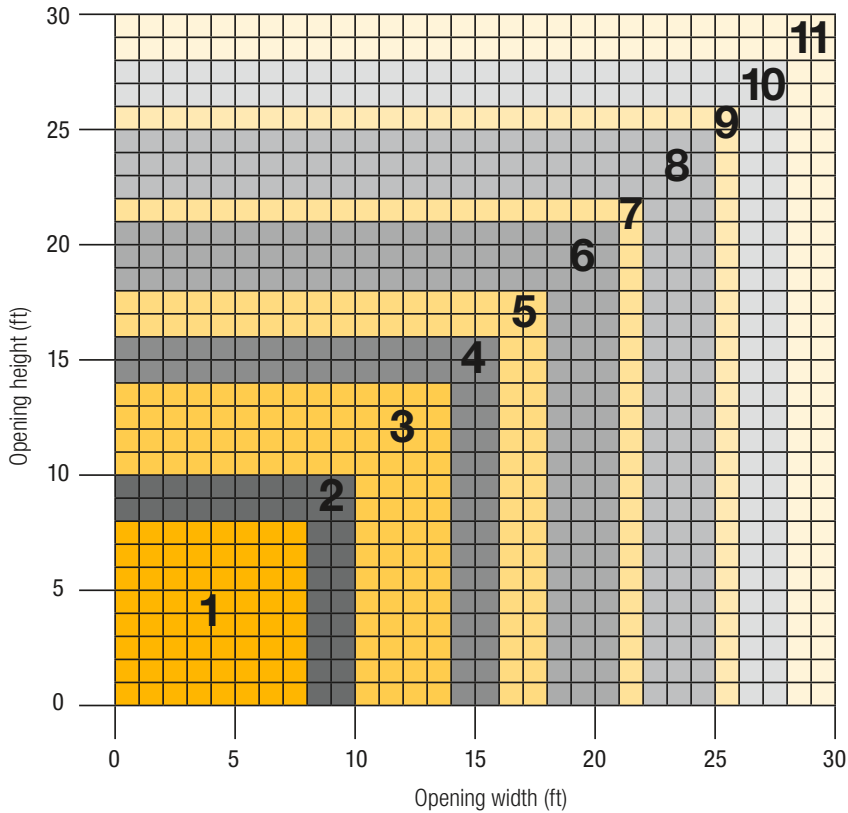




MEASURE THE WIDTH AND HEIGHT OF THE OPENING

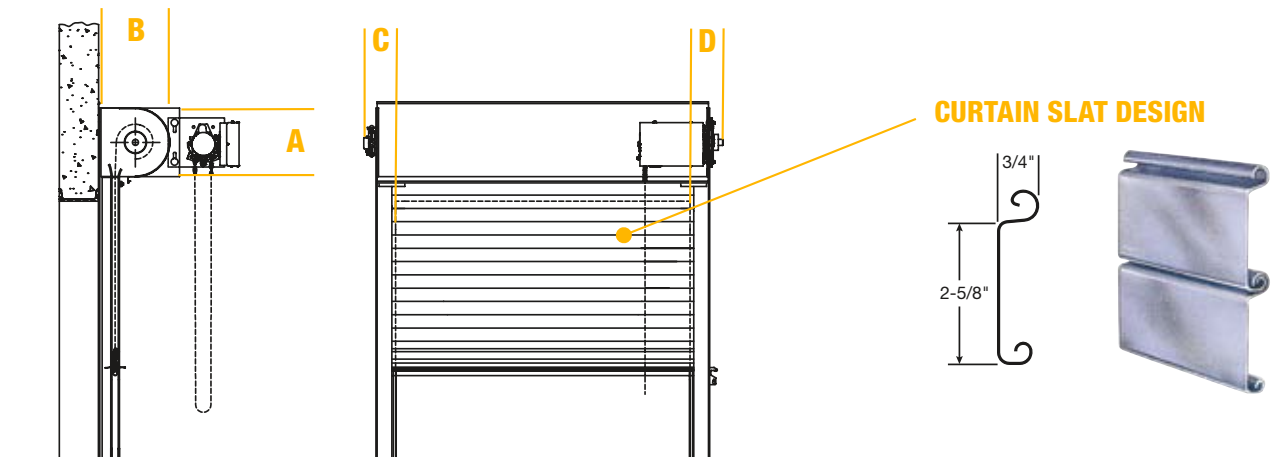
DOOR SIZE AND AREA



COMPONENT DIMENSIONS

Reference the zone number to view component dimensions for tube motorized doors.

1	14	16	5	7
2	15	17	5	7
3	16	18	5	7
4	17	19	5	9
5	18	20	5	9
6	19	21	5	9
7	20	22	7	9
8	21	23	7	9
9	22	24	7	11
10	23	25	7	11
11	24	26	7	11
Zone	A	B	C	D



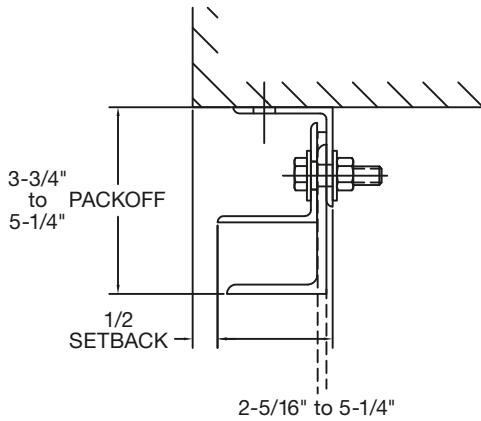
The dimensions featured on this sheet are provided as a guide.

GUIDE CONSTRUCTION OPTIONS

FACE OF WALL

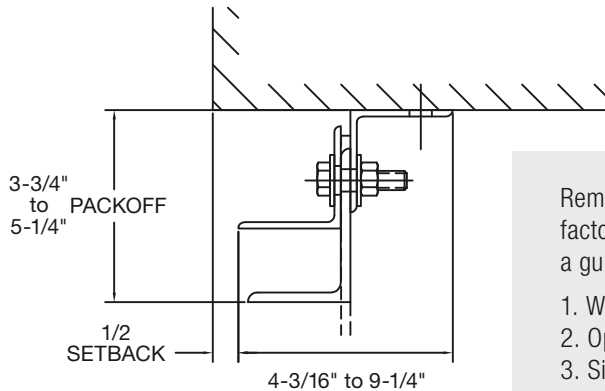
E GUIDE

Typically used with steel jamb.



Z GUIDE

Typically used with masonry wall construction.



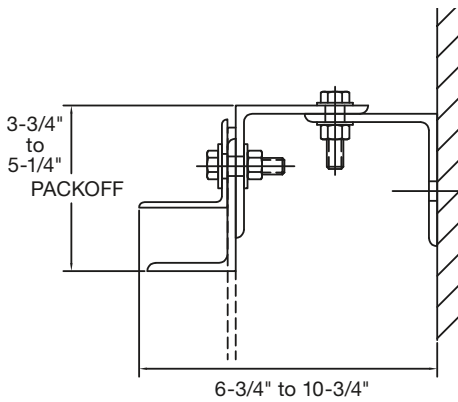
Remember, three main factors when choosing a guide assembly are:

1. Wall construction
2. Operation
3. Side clearance

BETWEEN JAMBS

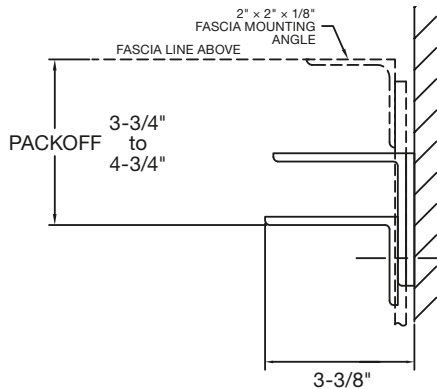
4 ANGLE

Most common for doors with chain/crank/motor operation.



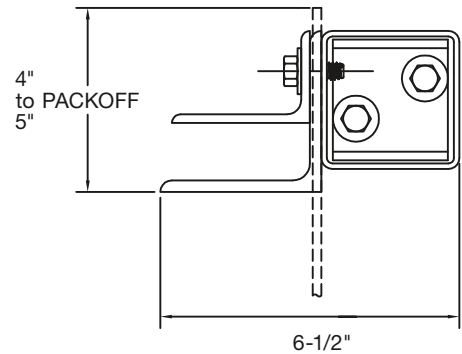
2 ANGLE

Typically used for small push-up doors that can utilize an inside spring adjustor.



2 ANGLE – TUBES

Typically used if there's no wall support, or tubes and guides need to be recessed within the wall construction.



The dimensions featured on this sheet are provided as a guide.

CUSTOM-DESIGNED SOLUTIONS

Contact our experienced Architectural Design Support Team for help in customizing our products to fit your specific application at www.architectdoorhelp.com.



For more information on these and other Clopay products, visit clopaycommercial.com. Architects and specifiers, visit architectdoorhelp.com.

